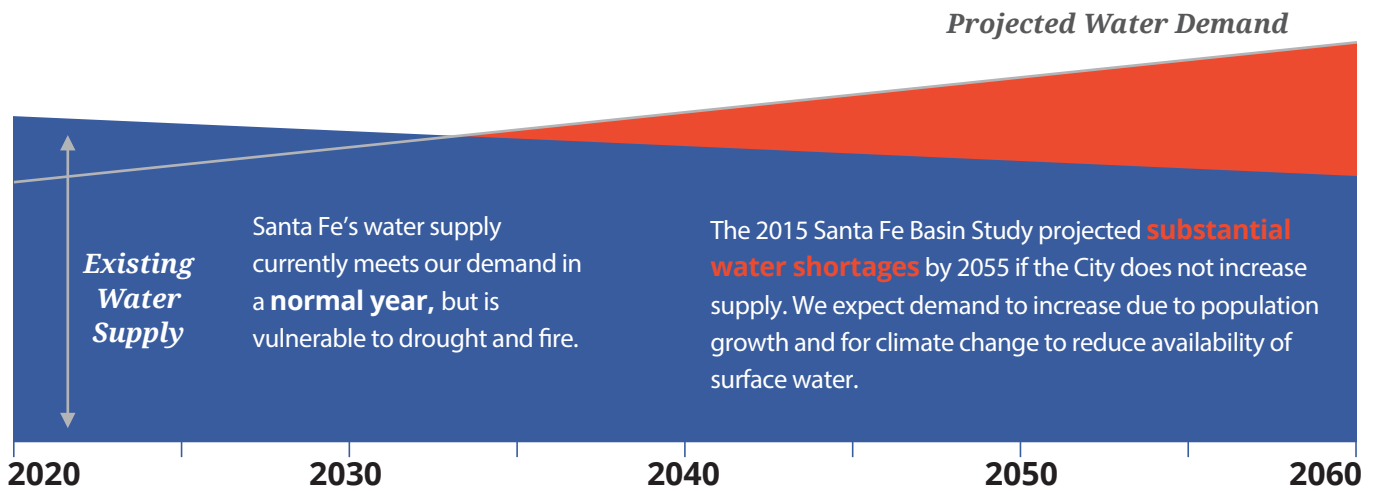
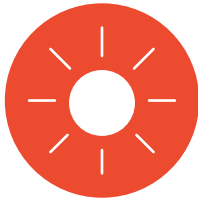


Water Supply Planning

Water supply planning helps to ensure that a water utility's supplies can reliably meet demands, both now and in the future, in an economically, socially, and environmentally responsible manner.



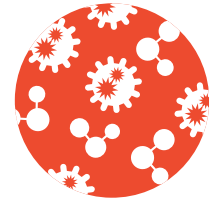
Persistent Threats to Santa Fe's Water Supply



Drought



Wildfire



Water Quality



Climate change is projected to exacerbate these threats

<https://www.santafenm.gov/water>

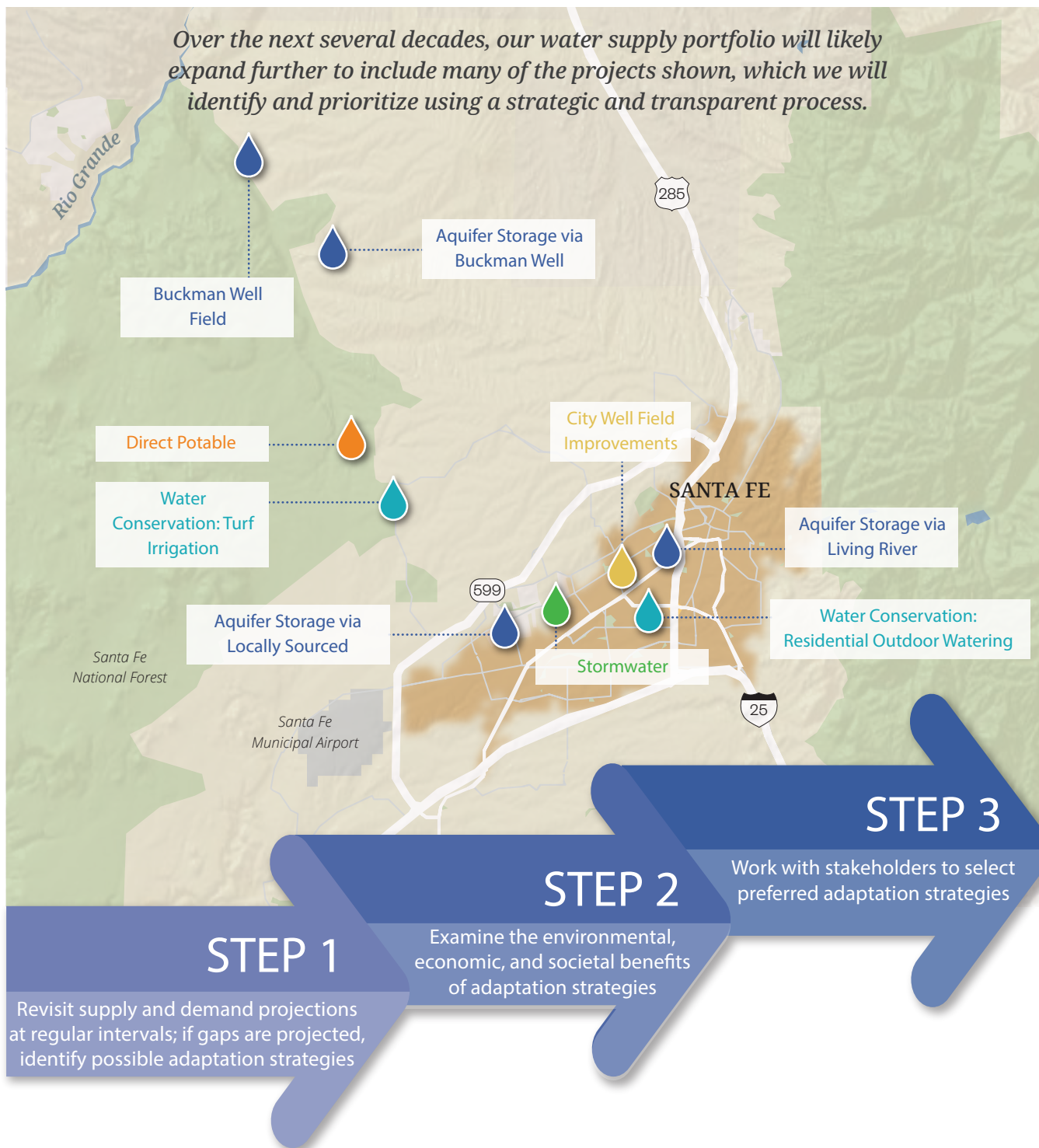


Our Strategy to Supply Santa Fe's Growing Water Demands

Over the past 70 years, Santa Fe's water supply portfolio has expanded by necessity to include both surface water and groundwater, local and imported. Santa Fe's guiding principles when addressing supply issues are to look first to conserve, then to identify supply options that offer the best return on

investment, considering environmental, economic, and societal benefits. We are currently planning a strategic expansion that fosters transition toward a system where local Santa Fe Basin water resources will be kept in the Santa Fe River watershed, while imported water supplies will be used to their fullest extent.

Over the next several decades, our water supply portfolio will likely expand further to include many of the projects shown, which we will identify and prioritize using a strategic and transparent process.



<https://www.santafenm.gov/water>

